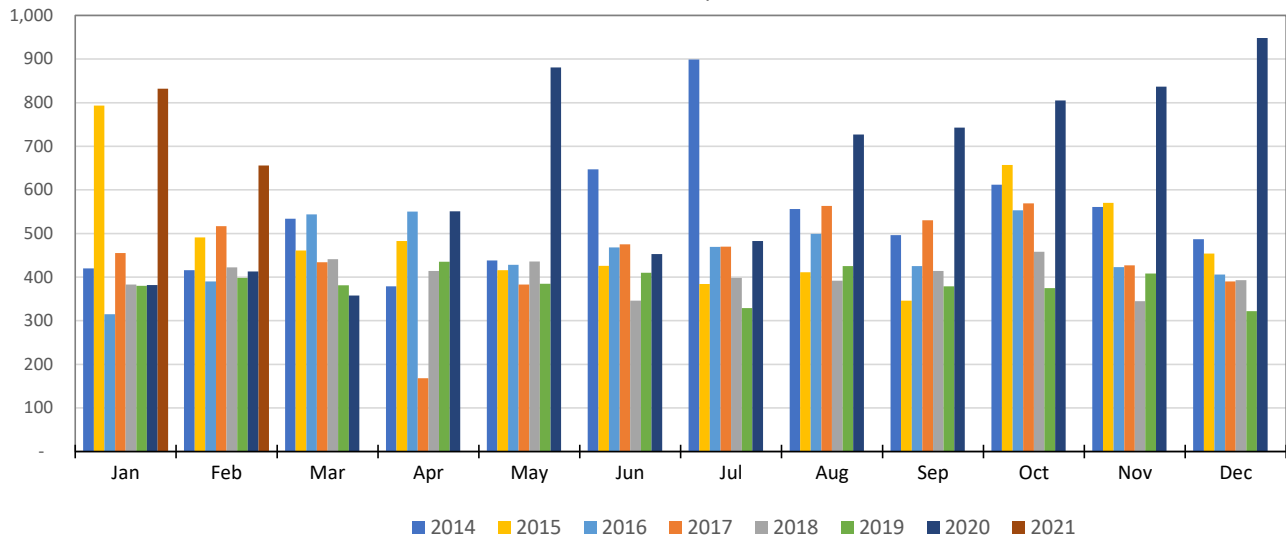


**Number of Client Household Visits Per Month**  
*Year over Year Comparison*



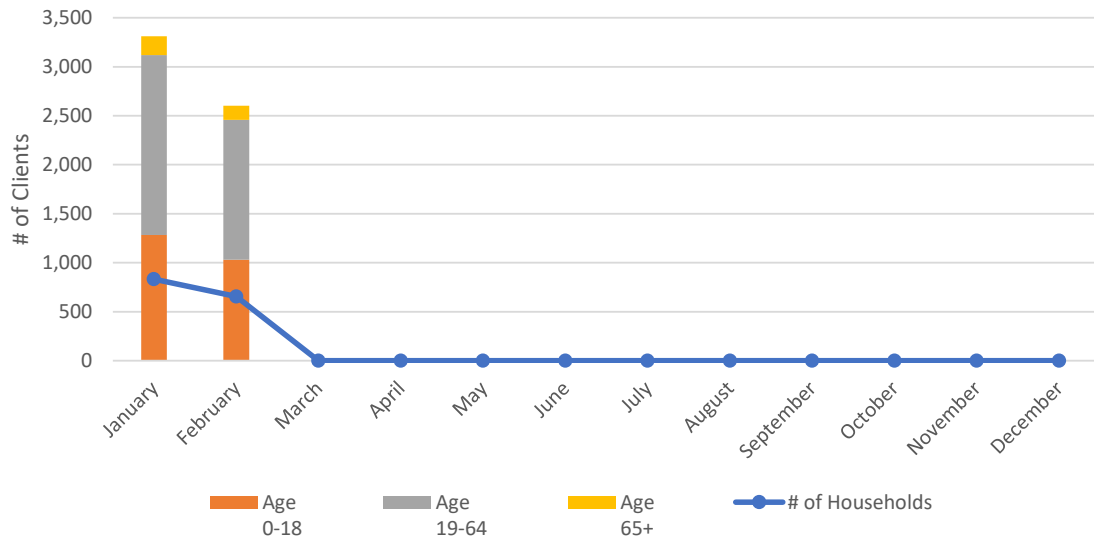
<b>HRFP Client Data</b>								
<i>Yearly Comparison of Client Households Served</i>								
MONTH	2014	2015	2016	2017	2018	2019	2020	2021
January	420	793	315	455	383	380	382	832
February	416	491	390	517	422	398	413	656
March	534	461	544	434	441	381	358	
April	379	483	550	168	414	435	551	
May	438	416	428	383	436	385	881	
June	647	426	468	475	346	410	453	
July	899	384	469	470	398	329	483	
August	556	411	499	563	392	425	727	
September	496	346	425	530	414	379	743	
October	612	657	553	569	458	375	805	
November	561	570	423	427	345	408	837	
December	487	454	406	390	393	322	948	
<b>TOTAL (YTD)</b>	<b>6,445</b>	<b>5,892</b>	<b>5,470</b>	<b>5,381</b>	<b>4,842</b>	<b>4,627</b>	<b>7,581</b>	<b>1,488</b>
<b>Avg/Month</b>	537	491	456	448	404	386	632	744
<b>% Change (of avg/month)</b>		-8.6%	-7.2%	-1.6%	-10.0%	-4.4%	63.8%	17.8%

Source: FoodStar & Salesforce August 31, 2020 ->

Updated: 2/28/2020

## People and Households Served By Month

January through December 2020



HRFP Client Data					
January through December 2021					
MONTH	# of Households	Age 0-18	Age 19-64	Age 65+	# of People
January	832	1,283	1,836	191	3,387
February	656	1,032	1,425	144	2,667
March	-				
April	-				
May	-				
June	-				
July	-				
August	-				
September	-				
October	-				
November	-				
December	-				
<b>TOTAL</b>	<b>1,488</b>	<b>2,315</b>	<b>3,261</b>	<b>335</b>	<b>6,054</b>
<b>Avg/Month</b>	744	1,158	1,631	168	3,027
<b>% of Total</b>		38%	54%	6%	100%

Updated: 2/28//2021

**NOTES:** All data reporting from Salesforce

Data through August 30, 2020 is from FoodStar (migrated into Salesforce)

Data from August 31, 2020 forward is from Salesforce (and created in Salesforce)

\* Salesforce.com household member data is incomplete, and we do not have birthdates for all members. Total # of People may not reconcile with sum of age brackets.

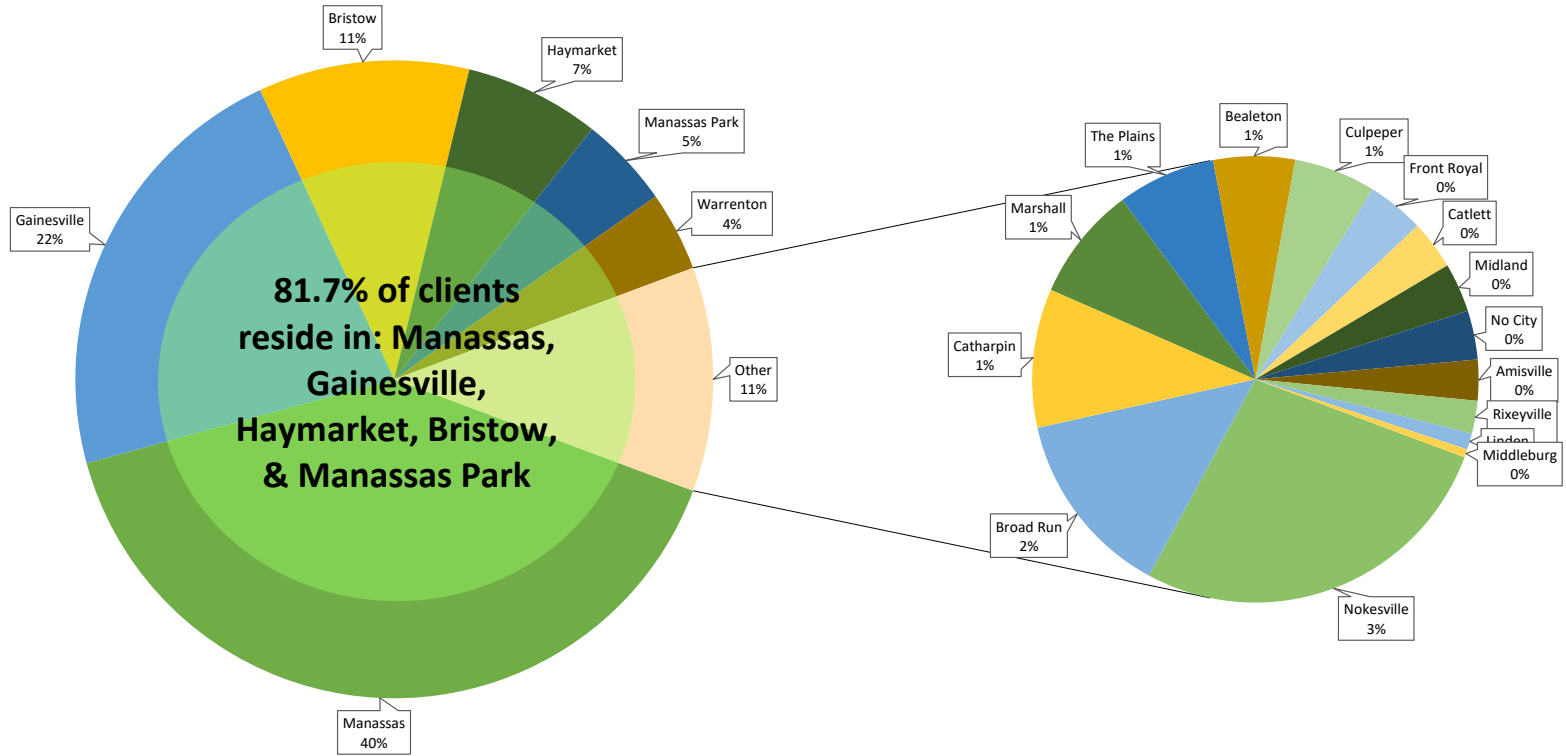
## Clients Served by City

January 1, 2021 through February 28, 2021

City	Zip Code	% Of Total	# of Clients	People			# of People
				Age 0-18	Age 19-64	Age 65+	
Manassas	20109, 20110, 20111, 20112	40.08%	596	1,040	1,313	133	2,550
Gainesville	20155	22.33%	332	503	823	63	1,420
Bristow	20136	10.69%	159	191	339	62	596
Haymarket	20169	6.86%	102	164	170	29	372
Manassas Park	20111	4.64%	69	94	124	16	246
Warrenton	20186, 20187	4.03%	60	84	105	2	199
Nokesville	20181	3.09%	46	54	88	9	153
Broad Run	20137	1.55%	23	25	56	4	88
Catharpin	20143	1.14%	17	42	42	-	84
Marshall	20115	0.94%	14	26	32	-	59
The Plains	20198	0.81%	12	18	33	-	51
Bealeton	22712	0.67%	10	23	22	-	46
Culpeper	22701	0.67%	10	24	24	15	63
Front Royal	22630	0.47%	7	-	28	-	28
Catlett	20119	0.40%	6	12	20	-	32
Midland	22728	0.40%	6	1	6	1	15
No City	No Zip Code	0.40%	6	10	10	-	21
Amisville	20106	0.34%	5	-	10	-	10
Rixeyville	22737	0.27%	4	4	12	-	16
Linden	22642	0.13%	2	-	2	-	2
Middleburg	20117	0.07%	1	-	2	1	3
<b>Totals</b>		<b>100%</b>	<b>1,487</b>	<b>2,315</b>	<b>3,261</b>	<b>335</b>	<b>6,054</b>
<b>Monthly Average</b>			744	1,158	1,631	168	3,027
<b>% of Totals</b>				38%	54%	6%	100%

### Client Cities Served by HRFP

January through February 28, 2021



## Ages of Clients We Serve

*January through February 28, 2021*

