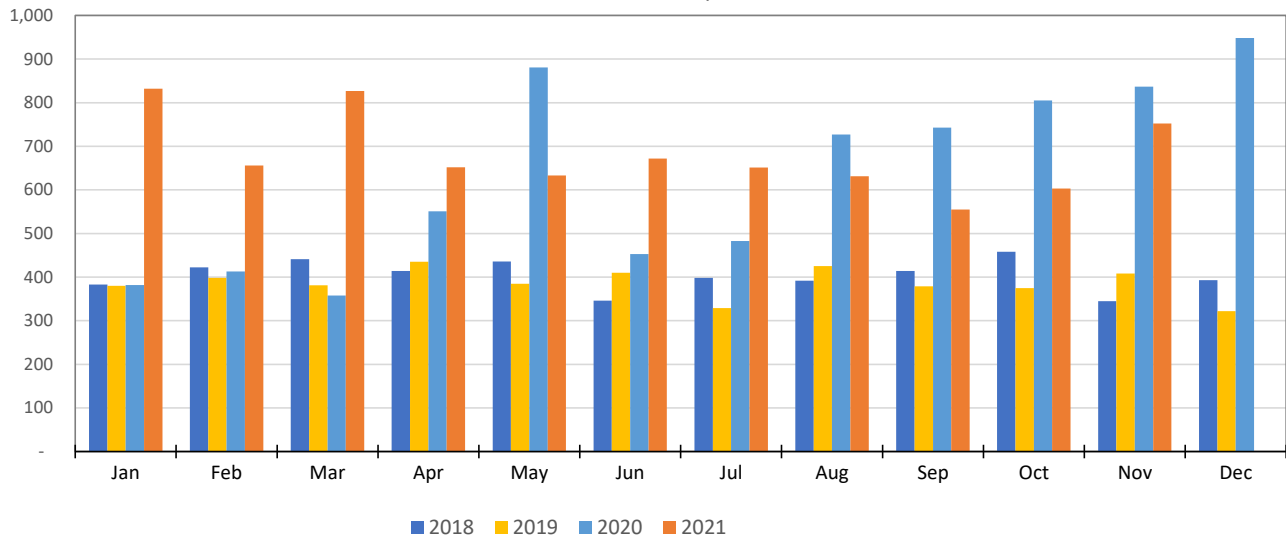


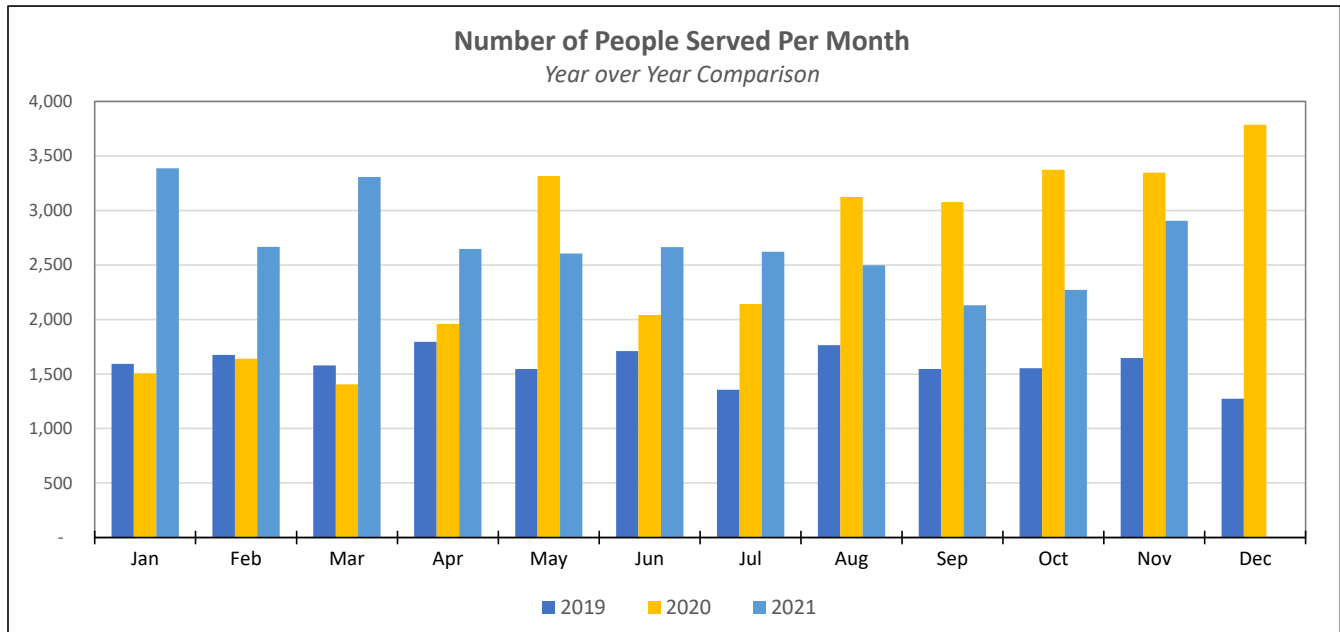
Number of Client Household Visits Per Month
Year over Year Comparison



HRFP Client Data								
<i>Yearly Comparison of Client Households Served</i>								
MONTH	2014	2015	2016	2017	2018	2019	2020	2021
January	420	793	315	455	383	380	382	832
February	416	491	390	517	422	398	413	656
March	534	461	544	434	441	381	358	827
April	379	483	550	168	414	435	551	652
May	438	416	428	383	436	385	881	633
June	647	426	468	475	346	410	453	672
July	899	384	469	470	398	329	483	651
August	556	411	499	563	392	425	727	631
September	496	346	425	530	414	379	743	555
October	612	657	553	569	458	375	805	603
November	561	570	423	427	345	408	837	752
December	487	454	406	390	393	322	948	
TOTAL (YTD)	6,445	5,892	5,470	5,381	4,842	4,627	7,581	7,464
Avg/Month	537	491	456	448	404	386	632	679
% Change (of avg/month)		-8.6%	-7.2%	-1.6%	-10.0%	-4.4%	63.8%	7.4%

Source: FoodStar & Salesforce August 31, 2020 ->

Updated: 11/30/2021



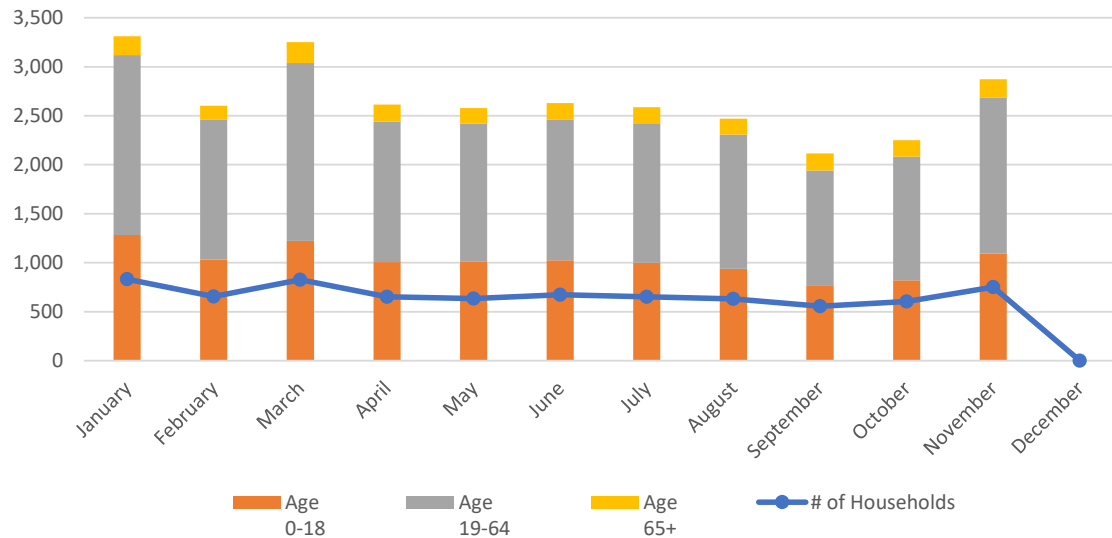
HRFP Client Data								
<i>Yearly Comparison of People Served</i>								
MONTH	2014	2015	2016	2017	2018	2019	2020	2021
January	1,908	3,650	1,455	2,100	1,628	1,593	1,505	3,387
February	1,902	2,195	1,852	2,363	1,823	1,676	1,639	2,667
March	2,556	2,073	2,536	1,956	1,832	1,578	1,405	3,306
April	1,731	2,265	2,542	764	1,736	1,794	1,958	2,647
May	2,012	1,936	1,910	1,718	1,805	1,547	3,316	2,604
June	3,053	2,009	2,062	2,148	1,494	1,710	2,041	2,664
July	4,302	1,803	2,129	2,119	1,711	1,355	2,143	2,621
August	2,531	2,011	2,297	2,547	1,731	1,764	3,124	2,498
September	2,288	1,678	1,980	2,348	1,767	1,547	3,077	2,130
October	2,884	3,160	2,484	2,532	1,961	1,553	3,373	2,272
November	2,587	2,551	1,878	1,915	1,412	1,648	3,348	2,905
December	2,151	1,991	1,838	1,732	1,614	1,273	3,787	-
TOTAL (YTD)	29,905	27,322	24,963	24,242	20,514	19,038	30,716	29,701
Avg/Month	2,492	2,277	2,080	2,020	1,710	1,587	2,560	2,700
% Change (of avg/month)	-	-8.6%	-8.6%	-2.9%	-15.4%	-7.2%	61.3%	5.5%

Source: FoodStar & Salesforce August 31, 2020 ->

Updated: 11/30/2021

People and Households Served By Month

January through December 2021



HRFP Client Data					
January through December 2021					
MONTH	# of Households	Age 0-18	Age 19-64	Age 65+	# of People
January	832	1,283	1,836	191	3,387
February	656	1,032	1,425	144	2,667
March	827	1,223	1,814	215	3,306
April	652	1,008	1,432	175	2,647
May	633	1,009	1,410	158	2,604
June	672	1,025	1,433	172	2,664
July	651	1,000	1,416	171	2,621
August	631	937	1,371	163	2,498
September	555	762	1,179	173	2,130
October	603	821	1,260	169	2,272
November	752	1,093	1,592	187	2,905
December	-				
TOTAL	7,464	11,193	16,168	1,918	29,701
Avg/Month	679	1,018	1,470	174	2,700
% of Total		38%	54%	6%	100%

Updated: 11/30/2021

NOTES: All data reporting from Salesforce

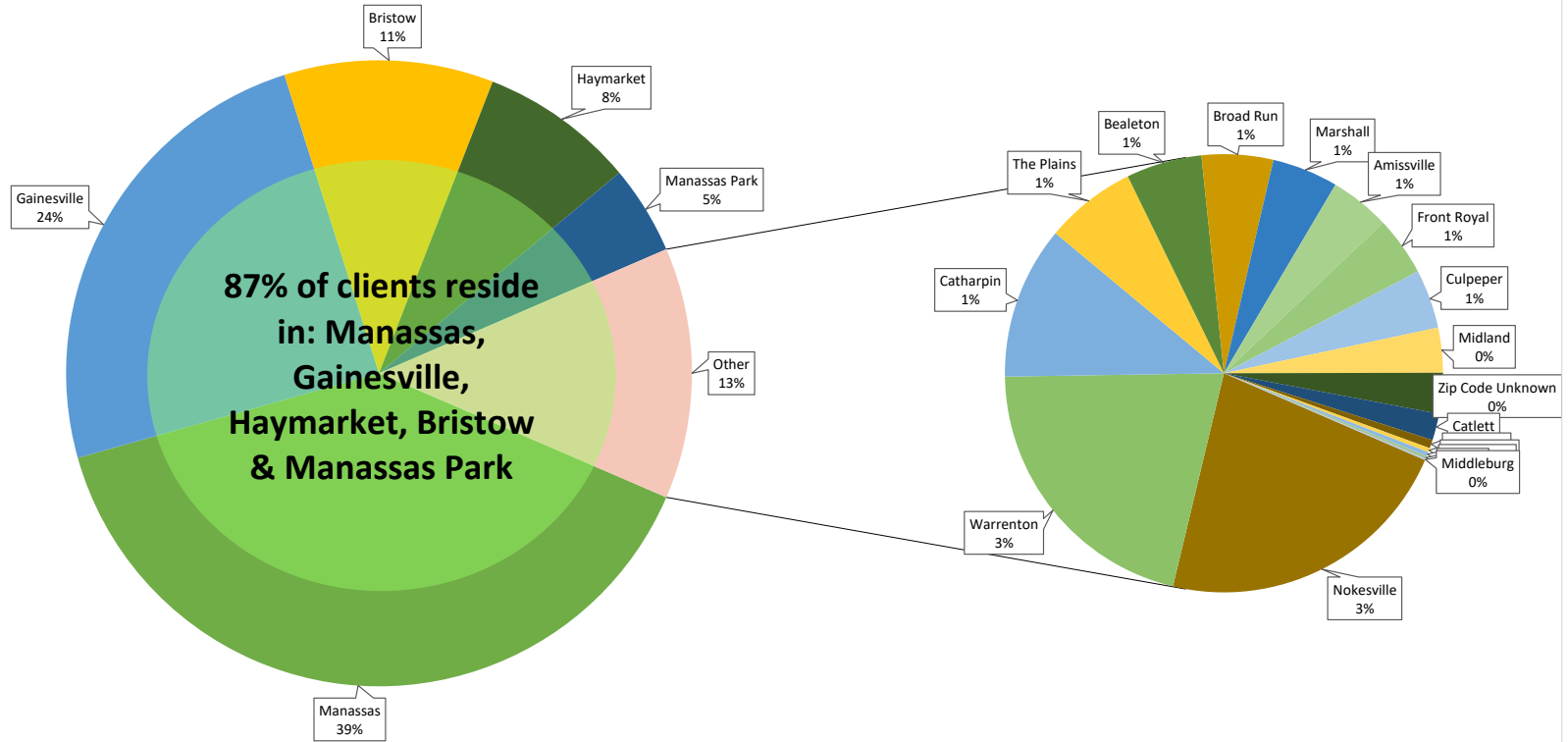
Data through August 30, 2020 is from FoodStar (migrated into Salesforce)

Data from August 31, 2020 forward is from Salesforce (and created in Salesforce)

* Salesforce.com household member data is incomplete, and we do not have birthdates for all members. Total # of People may not reconcile with sum of age brackets.

Client Cities Served by HRFP

January through November 30, 2021



Clients Served by City

January 1, 2021 through November 30, 2021

City	Zip Code	% Of Total	# of Client HHs	People			Total
				Age 0-17	Age 18-64	Age 65+	
Manassas	20109, 20110, 20111, 20112	39.15%	2,916	4,640	6,297	660	11,744
Gainesville	20155	24.46%	1,822	2,583	4,359	388	7,467
Bristow	20136	10.81%	805	782	1,717	397	2,903
Haymarket	20169	8.02%	597	1,006	988	242	2,279
Manassas Park	20111	4.58%	341	553	655	95	1,318
Nokesville	20181	2.89%	215	380	452	34	874
Warrenton	20187, 20186	2.73%	203	334	422	3	769
Catharpin	20143	1.46%	109	290	273	-	563
The Plains	20198	0.87%	65	134	158	-	292
Bealeton	22712	0.73%	54	127	124	-	254
Broad Run	20137	0.68%	51	55	152	15	234
Marshall	20115	0.63%	47	151	106	-	258
Amissville	20106	0.58%	43	-	86	-	86
Front Royal	22630	0.56%	42	-	168	-	168
Culpeper	22701	0.56%	42	107	102	61	270
Midland	22728	0.43%	32	1	18	16	52
Zip Code Unknown		0.39%	29	-	8	-	29
Catlett	20119	0.26%	19	32	53	-	85
Rixeyville	22737	0.08%	6	6	18	-	24
Remington	22734	0.04%	3	-	3	-	3
Centreville	20121	0.04%	3	12	6	6	24
Linden	22642	0.03%	2	-	2	-	2
Middleburg	20117	0.01%	1	-	2	1	3
Fairfax	22033		1	-	-	-	1
Totals		100%	7,448	11,193	16,169	1,918	29,702
Monthly Average			745	1,119	1,617	192	2,970
% of Totals				38%	54%	6%	100%

Ages of Clients We Serve

January through November 30, 2021

